



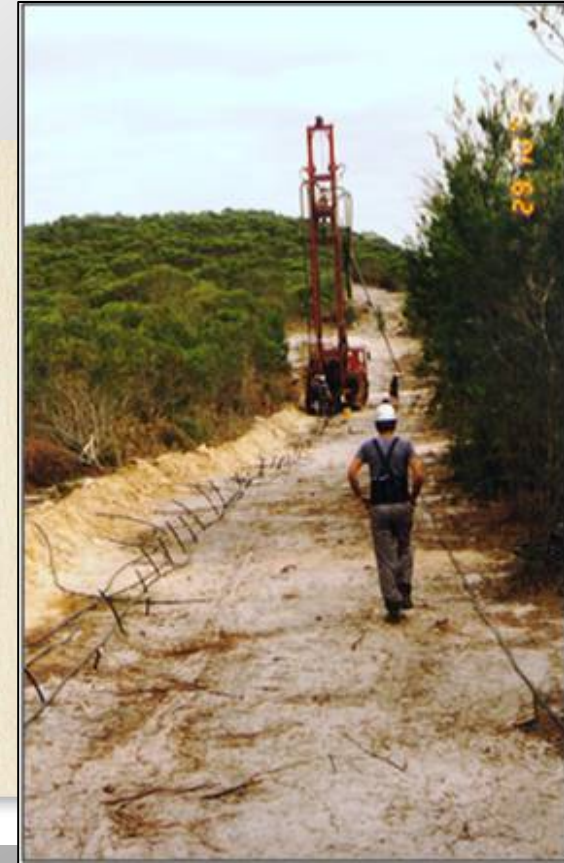
# *Welcome to GrouTech*

From

**Mr Dan Muntz**

**Mr Matt Howell and**

**Mr Norm Howell**



# Overview - GrouTech

## Professional

- ✓ **There's depth to the image**
- ✓ **Specialised Grouting designs**
- ✓ **Large volumes placed and in short time frames**
- ✓ **Large capacity equipment**

## Technical

- ✓ **Knowledge to mix & place products that react and set**
- ✓ **An in depth understanding of grouts**
- ✓ **Pre site trials**

## Track Record

- ✓ **Mining - Xstrata, BMA, Rio Tinto, Peabody & Anglo**
- ✓ **Commercial & Industrial - Q Rail, Main Roads**
- ✓ **Ports Corporation, Eastern Pipeline Alliance**
- ✓ **Origin, Santos, Boral, Coke a Cola, ABB, Hanson**

# Void formation below slabs



- Pumping of fines causing voids to form



Re-support slabs, save on slab removal replacement and disruption delays



# Void filling – Safety and Productivity

Where?

- Sites with heavy or dynamic loads
- Sites with water problems
- Swampy sites with poor sub-base



- Slab life extended
- Site delays and closure prevented

# Void filling Bridges – Road Safety



Re-level & support  
relieving slabs for safety



# Void filling Gateway Bridge - Brisbane



No Delays to Traffic

# Void filling Rail Culverts

Rail transport for coal  
mines





# Road Culverts



This grouting saved catastrophic failure during the wet season



# Subsided Industrial Slabs - Safety and Productivity



Re-level subsided slabs  
taking away tripping hazards and  
loads falling from forklifts

# Subsided Slabs Re-levelled

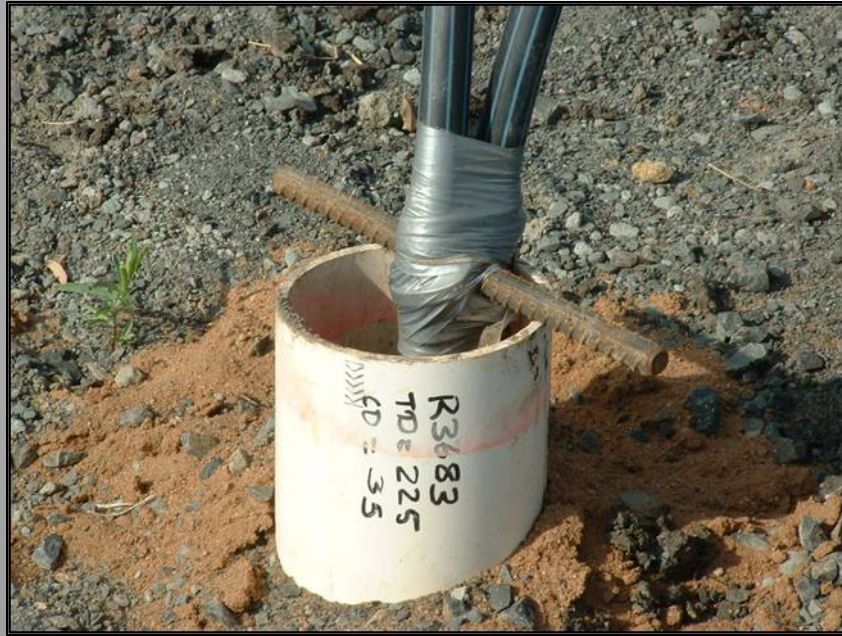
## Controlled Lifting



No downtime or yard closure –  
job completed in one shift



# Mine Fault Zone Pre-Consolidation – Safety



Surface to Seam  
Longwall Coal  
Mines



# Pre – Consolidate for Safety and Productivity



- Over 300 metres in depth
- Pre-consolidate by pressure grouting
- Improve strata 15 metres above seam

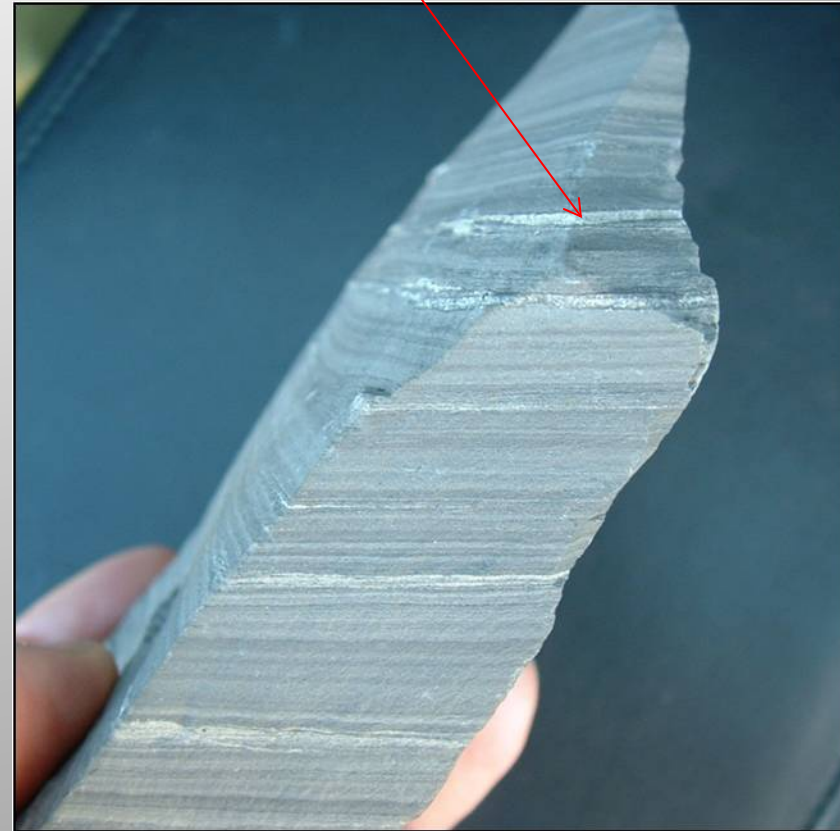


# Grout Penetration in Faulted Strata

Siltstone/Mudstone  
From roof above seam



Grout in strata



# Coal Mine - Spontaneous Combustion Control



GROUTECH AUSTRALIA PTY LTD - Copyright 2011



# Crane Rail Support – Time is money

All of this placed in a couple of hours!



Attention to detail



# Large Capacity Non Shrink Grouting



- 500 litres per batch
- A pallet of grout per mix!
- 6 cubic metres placed in 80 minutes
- Grouts that set in less than 10 minutes





# Dam Construction Non-Shrink



- Large volumes placed to meet your schedule
- High capacity



# Gas Compressor Bases



- Coal Seam Gas Compressor Base
- 3,600 litres epoxy grout in less than 1 hour



- Nonshrink grouting



# Gas Compressor Bases



- Epoxy Grouting



# Subsidence Correction at Weipa Dump Hopper



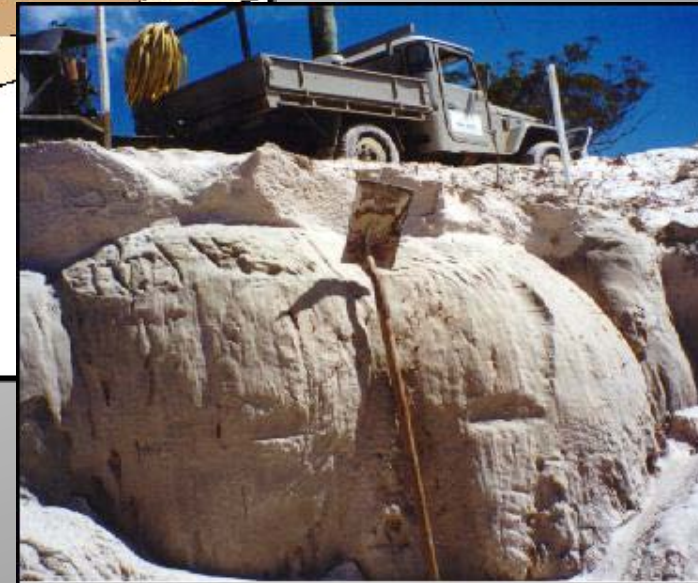
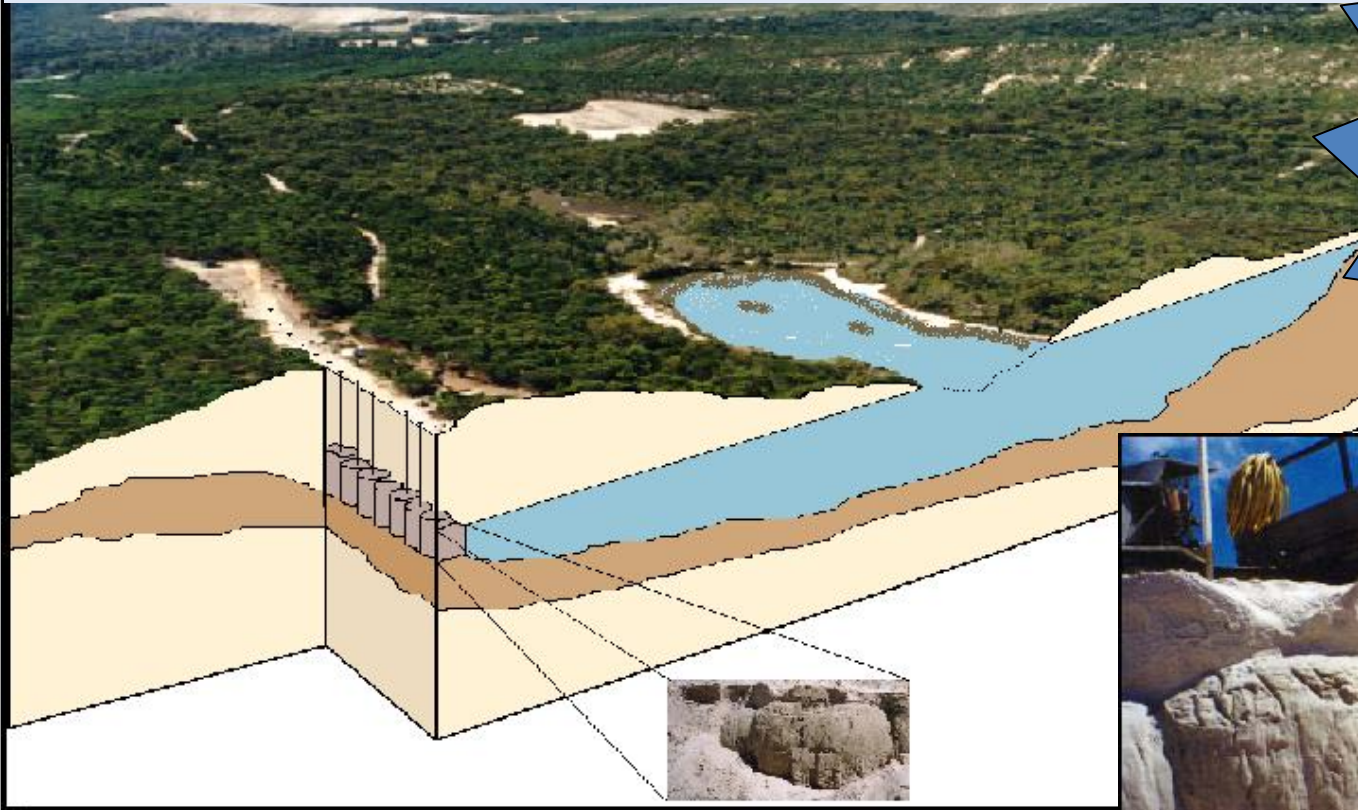
- 400mm subsidence correction
- Consolidation of fill material



# Environmental Damage Repair

Lake Kounpee Stradbroke Island Brisbane!

- World first
- Unique



- Underground dam construction
- Dam Size 275m x 12m x 1.5m
- Constructed 50m below the surface
- In sand!

# Underground Dam Wall Leeching Control



- Solidify sand
- Increase bearing capacity
- Reduce permeability



# Quintel Beach Indigenous Community - Wharf Repairs



- Maintaining access during wet season

# Professional Personnel and Quality In House Training



Written procedures for all services & products

Theory & Practical  
Training & Testing



# Valuable - Details

## GrouTech (Aust) Pty Ltd

Ph 07 3284 4033  
Fax 07 3284 4795  
E-mail [reception@groutech.com.au](mailto:reception@groutech.com.au)  
Web site: [www.groutech.com.au](http://www.groutech.com.au)

## Important Contacts

Norm Howell – GM	<a href="mailto:norm.howell@groutech.com.au">norm.howell@groutech.com.au</a>	0418 328 424
Dan Muntz – Senior Civil Estimator	<a href="mailto:dan.muntz@groutech.com.au">dan.muntz@groutech.com.au</a>	0409 926 594
Matt Howell – Systems Manager	<a href="mailto:systems@groutech.com.au">systems@groutech.com.au</a>	0433 315 660
Aaron Davies - Operations	<a href="mailto:aaron.davies@groutech.com.au">aaron.davies@groutech.com.au</a>	0499 977 811